

Magnetic contacts

Product flyer



Reynaers
Aluminium

Windows.
Doors.
Curtain Walls.

Together for better

www.reynaers.com

METALFORM

Your invisible inner peace

Validated and certified magnet contacts for
official alarm system integration and steering
HVAC.



Trigger an action

Monitor all your relevant windows, doors and sliding doors with integrated magnetic contacts. An interruption of the reed-contact will trigger an alarm system or can turn off heating, ventilation or air-conditioning system (HVAC) to save energy.

Your one-stop shop for aluminum joinery solutions

Reynaers Aluminium is the professional one-stop shop for all aluminum façade and joinery solutions. From windows and doors to features like magnetic contacts: whatever you need, your dedicated contact person is at your disposal throughout the entire project and offers professional advice and support for Reynaers' entire product range.

Certification

Validated and certified magnet contacts for official alarm system integration in coöperation with reliable partners.

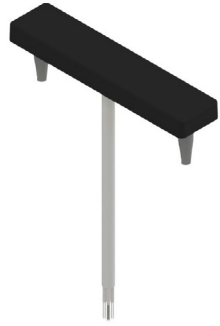


METALFORM

ARTICLE OVERVIEW

Reed-Sensor

060.6750.04



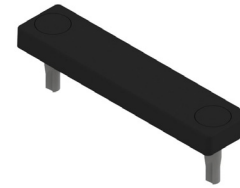
Door magnet

060.6752.04



Window magnet

060.6753..04



Sliding window bracket set

060.6754.-



Testing device

060.6756.-



Sobinco Chrono solution (locked/unlocked feedback)

060.6751.-



Sobinco Chrono tilt solution

060.6757.-



Please download the Project Integration Conformity Document:



SPECIFICATIONS

ARTICLE	060.6750.04	060.6751.-/060.6757.-
Color reed-contact	Black	
Contact functions	Normally closed (NC)	
Approvals	<ul style="list-style-type: none"> • INCERT B-582-0013; • EN 50131-2-6 Grade 2 (EN-ST-000102) • Environmental class (EN50130-5:2011) IIIA • VDS Class B (G 116504) • SBSC Class 2 - Environmental class II SSF 1014 v5 (9-216) 	<ul style="list-style-type: none"> • INCERT B-582-0013 • EN 50131-2-6 Grade 2 (EN-ST-000093) • Environmental class (EN50130-5:2011) IIIA • VDS Class B (G 199523) • SBSC Class 2 - Environmental class III SSF 1014 v5 (9-215)
Contact rating	48 VDC / 500 mA / 10 VA	
Magnet type	Alnico 5	
Connection	Cable - 6 m - Ø 3,4 mm, 4x0,182 mm ²	
Housing material	ABS Plastic	
Color magnets	Black	Stainless steel
Operating temperature range	-40°C and +70°C	
Housing protection class	IP 67	
Contact dimensions (L x W x H) mm	60.5 x 5.0 x 13.7 mm	60.1 x 9.0 x 9.2 mm

More information about integration can be found in our catalogues

METALFORM

MASTERS OF METAL

UNITED KINGDOM

METALFORM

NORWAYMETAL LTD

53 Chelsea Manor Street

London, SW3 5RZ

SALES@METALFORM.UK

+44 20 81298814

GERMANY

METALFORM GMBH

Carl-Zeiss-Ring 15A

85737 Ismaning

SALES@METALFORMGROUP.DE

+49 17663630406

NORWAY

METALFORM AS

Brochmannsveien 2

1950 Rømskog

SALG@METALFORM.NO

+47 401 62 446

METALFORMGROUP

SALES@METALFORMGROUP.COM